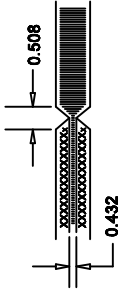


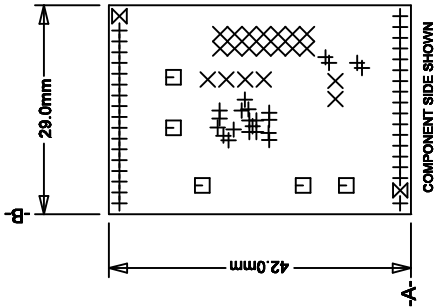
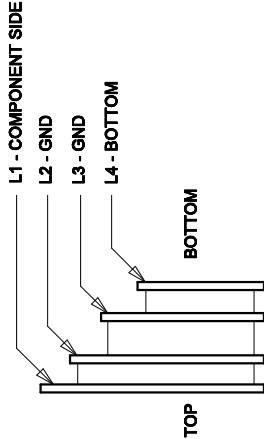
REVISION HISTORY			
ECO	REV	DESCRIPTION	DATE
	1	PRODUCTION	06/17/10

NOTES: UNLESS OTHERWISE SPECIFIED,

1. FAB PER IPC-A-600
2. MATERIAL: -EPOXY FIBERGLASS, NEMA GRADE FR-4  
 -FINISHED THICKNESS TO BE 1.8 +/- 0.127  
 -TOTAL OF 4 LAYERS WITH 2 OZ. CU ON THE OUTER LAYERS AND 1 OZ. CU ON THE INNER LAYERS.  
 -FLAMMABILITY RATING: 94 V-0 MINIMUM .
3. SIZE: CUT TO DIMENSIONS AND TOLERANCES SHOWN.  
 0.00" ARE PRIMARY DATUMS.
4. DRILLING: DRILL HOLES PER SCHEDULE. PLATE THROUGH HOLES WITH COPPER 0.0254 THICK MIN.  
 ALL HOLE SIZES ARE SPECIFIED AFTER PLATING.  
 HOLE LOCATION TOLERANCES ARE +/-0.0762 IN RELATION TO CENTER
5. FINISH: -SMOBC USING LPI BOTH SIDES, COLOR GREEN.  
 -GOLD IMMERION BOTH SIDES  
 -SILKSCREEN BOTH SIDES WITH WHITE NON-CONDUCTIVE INK.
6. DO NOT ALTER ARTWORK e.g. TO ADD LOGO OR DATE CODE.  
 PAD SIZE CAN BE MODIFIED TO MEET END FINISH.
7. PCB SHALL BE RoHS COMPLIANT.
8. SCORING:



LAYER STRUCTURE



SIZE	QTY	SYM	PLATED	TOL
0.25	56	+	YES	+/-0.08
0.9	20	X	YES	+/-0.08
1.6	5	□	YES	+/-0.13
1.8	2	⊗	NO	+/-0.13

<div>APPROVALS</div>		<div><div><div><div>1608 MCCARTHY BLVD MILPITAS, CA 95035 PH: (408)432-1800 www.linear.com</div><div>LTC CONFIDENTIAL- FOR CUSTOMER USE ONLY</div></div></div><div><div>LINEAR</div><div>TECHNOLOGY</div></div></div>		
<div>PCB DES.</div>	<div>MI</div>	<div>TITLE: FABRICATION DRAWING, 16-BIT DIFFERENTIAL DELTA SIGMA SPI ADC</div>		
<div>APP. ENG.</div>	<div>LEO C.</div>			
<div>UNLESS OTHERWISE SPECIFIED DIMENSIONS ARE IN MILLIMETERS TOLERANCES ON ANGLE ±1°</div> <div>XX ± 0.254 XXX ± 0.127</div> <div>INTERPRET DIM AND TOL PER ASME Y14.5M-1994</div> <div>THIRD ANGLE PROJECTION</div>		<div>SIZE</div> <div>N/A</div>	<div>IC NO</div> <div>LTC2472CDD</div>	<div>REV</div> <div>1</div>
<div>DO NOT SCALE DRAWING</div>		<div>SCALE: NONE</div>	<div>FILENAME:</div> <div>1629a-1.PCB</div>	<div>SHT 1 of 1</div>